

HIKVISION



Explosion-Proof IR Zoom Bullet Camera

Quick Start Guide

UD05898B

Quick Start Guide

COPYRIGHT ©2017 Hangzhou Hikvision Digital Technology Co., Ltd.

ALL RIGHTS RESERVED.

Any and all information, including, among others, wordings, pictures, graphs are the properties of Hangzhou Hikvision Digital Technology Co., Ltd. or its subsidiaries (hereinafter referred to be “Hikvision”). This user manual (hereinafter referred to be “the Manual”) cannot be reproduced, changed, translated, or distributed, partially or wholly, by any means, without the prior written permission of Hikvision. Unless otherwise stipulated, Hikvision does not make any warranties, guarantees or representations, express or implied, regarding to the Manual.

About this Manual

This Manual is applicable to Explosion-Proof IR Zoom Bullet Camera. The Manual includes instructions for using and managing the product. Pictures, charts, images and all other information hereinafter are for description and explanation only. The information contained in the Manual is subject to change, without notice, due to firmware updates or other reasons. Please find the latest version in the company website (<http://overseas.hikvision.com/en/>).

Please use this user manual under the guidance of professionals.

Trademarks Acknowledgement

HIKVISION and other Hikvision’s trademarks and logos are the properties of Hikvision in various jurisdictions. Other trademarks and logos mentioned below are the properties of their respective owners.

Legal Disclaimer

TO THE MAXIMUM EXTENT PERMITTED BY APPLICABLE LAW, THE PRODUCT DESCRIBED, WITH ITS HARDWARE, SOFTWARE AND FIRMWARE, IS PROVIDED "AS IS", WITH ALL FAULTS AND ERRORS, AND HIKVISION MAKES NO WARRANTIES, EXPRESS OR IMPLIED, INCLUDING WITHOUT LIMITATION, MERCHANTABILITY, SATISFACTORY QUALITY, FITNESS FOR A PARTICULAR PURPOSE, AND NON-INFRINGEMENT OF THIRD PARTY. IN NO EVENT WILL HIKVISION, ITS DIRECTORS, OFFICERS, EMPLOYEES, OR AGENTS BE LIABLE TO YOU FOR ANY SPECIAL, CONSEQUENTIAL, INCIDENTAL, OR INDIRECT DAMAGES, INCLUDING, AMONG OTHERS, DAMAGES FOR LOSS OF BUSINESS PROFITS, BUSINESS INTERRUPTION, OR LOSS OF DATA OR DOCUMENTATION, IN CONNECTION WITH THE USE OF THIS PRODUCT, EVEN IF HIKVISION HAS BEEN ADVISED OF THE POSSIBILITY OF SUCH DAMAGES.

REGARDING TO THE PRODUCT WITH INTERNET ACCESS, THE USE OF PRODUCT SHALL BE WHOLLY AT YOUR OWN RISKS. HIKVISION SHALL NOT TAKE ANY RESPONSIBILITIES FOR ABNORMAL OPERATION, PRIVACY LEAKAGE OR OTHER DAMAGES RESULTING FROM CYBER ATTACK, HACKER ATTACK, VIRUS INSPECTION, OR OTHER INTERNET SECURITY RISKS; HOWEVER, HIKVISION WILL PROVIDE TIMELY TECHNICAL SUPPORT IF REQUIRED.

SURVEILLANCE LAWS VARY BY JURISDICTION. PLEASE CHECK ALL RELEVANT LAWS IN YOUR JURISDICTION BEFORE USING THIS PRODUCT IN ORDER TO ENSURE THAT YOUR USE CONFORMS THE APPLICABLE LAW. HIKVISION SHALL NOT BE LIABLE IN THE EVENT THAT THIS PRODUCT IS USED WITH ILLEGITIMATE PURPOSES.

IN THE EVENT OF ANY CONFLICTS BETWEEN THIS MANUAL AND THE APPLICABLE LAW, THE LATER PREVAILS.

0505001070715

Regulatory Information

FCC Information

Please take attention that changes or modification not expressly approved by the party responsible for compliance could void the user's authority to operate the equipment.

FCC compliance: This equipment has been tested and found to comply with the limits for a Class A digital device, pursuant to part 15 of the FCC Rules. These limits are designed to provide reasonable protection against harmful interference when the equipment is operated in a commercial environment. This equipment generates, uses, and can radiate radio frequency energy and, if not installed and used in accordance with the instruction manual, may cause harmful interference to radio communications. Operation of this equipment in a residential area is likely to cause harmful interference in which case the user will be required to correct the interference at his own expense.

FCC Conditions

This device complies with part 15 of the FCC Rules. Operation is subject to the following two conditions:

1. This device may not cause harmful interference.
2. This device must accept any interference received, including interference that may cause undesired operation.

EU Conformity Statement



This product and - if applicable - the supplied accessories too are marked with "CE" and comply therefore with the applicable harmonized European standards listed under the EMC Directive 2014/30/EU, the

LVD Directive 2014/35/EU, the RoHS Directive 2011/65/EU, the ATEX Directive 2014/34/EU.



2012/19/EU (WEEE directive): Products marked with this symbol cannot be disposed of as unsorted municipal waste in the European Union. For proper recycling, return this product to your local supplier upon the purchase of equivalent new equipment, or dispose of it at designated collection points. For more information see:

www.recyclethis.info



2006/66/EC (battery directive): This product contains a battery that cannot be disposed of as unsorted municipal waste in the European Union. See the product documentation for specific battery information. The battery is marked with this symbol, which may include lettering to indicate cadmium (Cd), lead (Pb), or mercury (Hg). For proper recycling, return the battery to your supplier or to a designated collection point. For more information see: www.recyclethis.info

Industry Canada ICES-003 Compliance




This device meets the CAN ICES-3 (A)/NMB-3(A) standards requirements.

Intended Use of the Camera

ATEX:  II 2GD Ex db IIC T6 Gb /Ex tb IIIC T80 °C Db IP68

IECEX: Ex db IIC T6 Gb /Ex tb IIIC T80°C Db IP68

Explosion-proof IR Zoom Bullet Camera Nameplate

<p style="text-align: center;">Explosion-Proof Bullet Camera</p> <p>Product Model:</p> <p>Protection Level: IP68 Ta: -40°C ~ +60°C</p> <p>Working Voltage: Working Current: ≤1000mA</p> <p>Product No.: xxxxxxxxxxxx Date of Production: xxxxxx</p>	<p>CML 17ATEX1189X</p> <p> II 2 G Ex db IIC T6 Gb</p> <p> II 2 D Ex tb III C T80°C Db</p> <p>IECEX CML 17.0103X</p> <p>Ex db IIC T6 Gb</p> <p>Ex tb III C T80°C Db</p> <p style="text-align: right;"> 0035</p>
<p>Hangzhou Hikvision Digital Technology Co., Ltd 555 Qianmo Road, Binjiang District, Hangzhou, China</p>	<p>WARNING: DO NOT OPEN WHEN EXPLOSIVE ATMOSPHERE IS PRESENT</p>



Safety Instruction

These instructions are intended to ensure that user can use the product correctly to avoid danger or property loss.

The precaution measure is divided into “Warnings” and “Cautions”

Warnings: Serious injury or death may occur if any of the warnings are neglected.

Cautions: Injury or equipment damage may occur if any of the cautions are neglected.

	
Warnings Follow these safeguards to prevent serious injury or death.	Cautions Follow these precautions to prevent potential injury or material damage.



Warnings

- Grounding:
The both internal and external earthing shall be connected reliably.
Ground wire cross-sectional area of not less than the phase connector cross-sectional area level, at least 4 mm².
- All the electrical operation should be strictly compliance with the electrical safety regulations, fire prevention regulations and other related regulations of the nation and region.

- Make sure that the power has been disconnected before you wire, install or disassemble the camera. Never wire, install or disassemble the camera in explosive environment.
- When the camera is installed on wall or ceiling, the device shall be firmly fixed.
- If smoke, odors or noise rise from the camera, turn off the power at once and unplug the power cable, and then contact the service center.
- If the camera does not work properly, contact your dealer or the nearest service center. Never attempt to disassemble the camera yourself. (We shall not assume any responsibility for problems caused by unauthorized repair or maintenance.)
- Installation could be only conducted by qualified personnel according to relevant national regulations.
- A readily accessible disconnect device shall be incorporated external to the equipment.



Cautions

- If the camera fails to synchronize local time with that of the network, you need to set up camera time manually. Visit the camera (via web browser or client software) and enter system settings interface for time settings.
- Make sure the power supply voltage is correct before using the camera.
- Do not drop the camera or subject it to physical shock.

- To ensure explosion-proof performance, do not damage explosion-proof surface.
- Do not aim the camera at the sun or extra bright places. Blooming or smearing may occur otherwise (which is not a malfunction), and affect the endurance of sensor at the same time.
- Do not place the camera in extremely hot, cold (the operating temperature shall be -40°C to $+60^{\circ}\text{C}$), dusty or damp locations, and do not expose it to high electromagnetic radiation.
- To avoid heat accumulation, good ventilation is required for operating environment.
- Keep the camera away from liquid while in use.
- While in delivery, the camera shall be packed in its original packing, or packing of the same texture.
- Regular part replacement: a few parts (e.g. electrolytic capacitor) of the equipment shall be replaced regularly according to their average enduring time. The average time varies because of differences between operating environment and using history, so regular checking is recommended for all the users. Contact with your dealer for more details.
- Improper use or replacement of the battery may result in hazard of explosion. Replace with the same or equivalent type only. Dispose of used batteries according to the instructions provided by the battery manufacturer.

Table of Contents

1 Overview	11
1.1 Introduction	11
1.1.1 Power Supply.....	11
1.1.2 Explosion-proof Parameters	11
1.1.3 Mechanical Specification	11
1.1.4 Working Environment.....	11
1.2 Model Description.....	12
1.3 Appearance Description	13
1.3.5 Type I Overview	13
1.3.6 Type II Overview	14
1.3.7 Type III Overview	15
1.3.8 Type IV Overview.....	16
1.4 Cable Description	17
2 Installation	18
Wall Mounting	19
3 Setting the Network Camera over the LAN	25
3.1 Wiring	25
3.2 Activating the Camera	26
3.2.1 Activation via Web Browser.....	26
3.2.2 Activation via SADP Software	28
3.3 Modifying the IP Address	29
4 Accessing via Web Browser	32

1 Overview

1.1 Introduction

Explosion-Proof IR Zoom Bullet Camera is a surveillance product capable of video/audio collecting, smart encoding and network transmitting. It adopts an embedded system and a high-performed hardware process platform to achieve good stability and reliability. You can visit and configure your camera via web browser and client software.

Explosion-proof network camera adopts a stainless steel enclosure, receiving an IP68 rating for ingress protection.

1.1.1 Power Supply

For detailed information about the power supply, refer to *Explosion-proof IR Zoom Bullet Camera Nameplate*.

1.1.2 Explosion-proof Parameters

For detailed information about explosion-proof parameters, refer to *Explosion-proof IR Zoom Bullet Camera Nameplate*.

1.1.3 Mechanical Specification

- Material: 304/316L Stainless Steel.

1.1.4 Working Environment

- Altitude (Above sea level): Within 2000 m.
- Humidity: Within 95%.

- Temperature: Refer to *Explosion-proof IR Zoom Bullet Camera Nameplate*.

Note:

To ensure safety of the users and explosion-proof performance of the camera, your installation environment must meet the installation requirements of the camera you purchased.

1.2 Model Description

The product can be named by rules as shown in Figure 1-1.

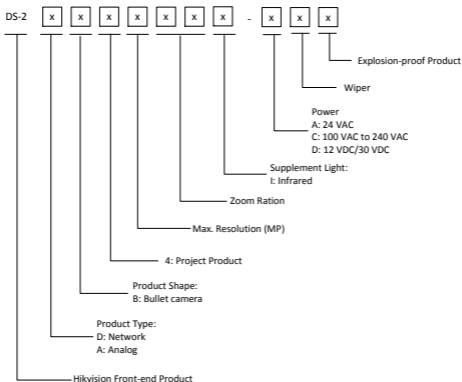


Figure 1-1 Model Explanation

1.3 Appearance Description

This camera series has four appearance types:

Type I: camera

Type II: camera with wiper

Type III: camera with IR and wiper

Type IV: camera with IR

1.3.5 Type I Overview

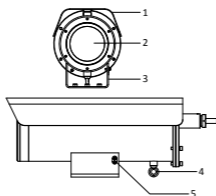


Figure 1-2 Overview of Type I Camera

Table 1-1 Description of Type I Camera

No.	Description	No.	Description
1	Sun shield	4	Ring for safety rope
2	Transparent glass	5	Grounding screw
3	Mounting base		

1.3.6 Type II Overview

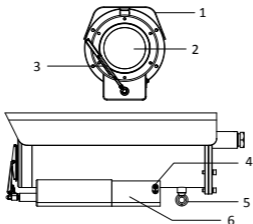


Figure 1-3 Overview of Type II Camera

Table 1-2 Description of Type II Camera

No.	Description	No.	Description
1	Sun shield	4	Grounding screw
2	Transparent glass	5	Ring for safety rope
3	Wiper	6	Mounting base

1.3.7 Type III Overview

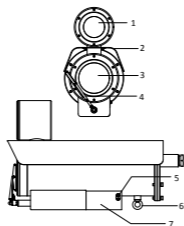


Figure 1-4 Overview of Type III Camera

Table 1-3 Description of Type III Camera

No.	Description	No.	Description
1	IR	5	Grounding screw
2	Sun shield	6	Ring for safety rope
3	Transparent glass	7	Mounting base
4	Wiper		

1.3.8 Type IV Overview

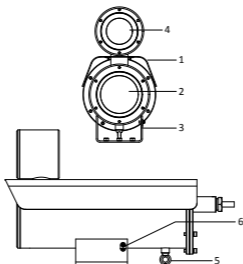


Figure 1-5 Overview of Type IV Camera

Table 1-4 Description of Type IV Camera

No.	Description	No.	Description
1	Sun shield	4	IR
2	Transparent glass	5	Ring for safety rope
3	Mounting base	6	Grounding screw

1.4 Cable Description

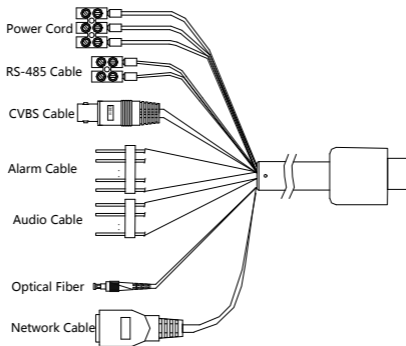


Figure 1-6 Cable Description

Note:

Cables vary depending on different camera models.

2 Installation

Before you start:

- Make sure the device in the package is in good condition and all the assembly parts are included.
- Make sure your power supply matches with your camera. Refer to specification for standard power supply of different camera models.
- Make sure all the related equipment is power-off during the installation.
- Check the specification of the products for the installation environment.
- Make sure that the wall is strong enough to withstand eight times the weight of the camera and the bracket.

Note:

Do not drag the camera with its waterproof cables as the figure below. Otherwise the waterproof performance is affected.

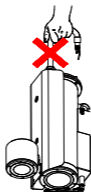


Figure 2-1 Do Not Drag the Cables

Wall Mounting

Before you start:

There is no wall mounting bracket included in the package. You have to prepare a wall mounting bracket if you choose this mounting type. The shown bracket below is only for demonstration.

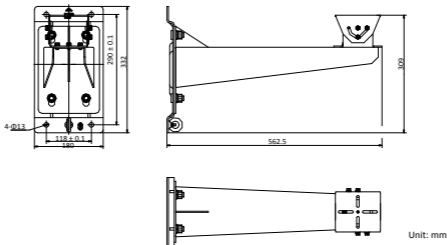


Figure 2-2 Dimension of a Wall Mounting Bracket (mm)

Note:

The camera series shares similar installation steps. We take type III camera as example.

Steps:

1. Disassemble the PT joint as shown in Figure 2-3 .
2. Install the pedestal of the PT joint to the mounting base of the camera with four supplied screws as shown in Figure 2-4.

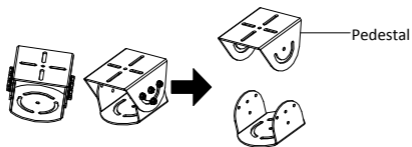


Figure 2-3 PT Joint

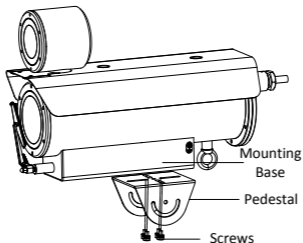


Figure 2-4 Install the Pedestal to Camera

3. Install the PT joint to the wall mounting bracket with four supplied screws.

Note:

Adjust the panning position of the PT joint to desired angle when installing.

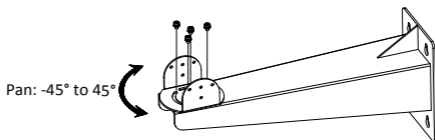


Figure 2-5 Screw the PT Joint to Wall Mounting Bracket

4. Align the screw holes on pedestal with those on PT joint. Fix the camera to the bracket.

Note:

Adjust the tilting position of the camera to desired angle when installing. Use at least three screws on each side of the PT joint to secure the camera.

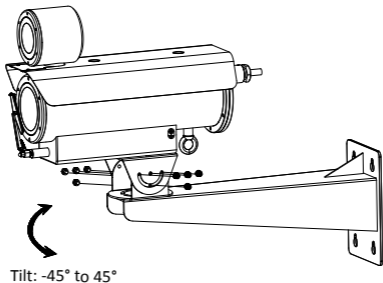


Figure 2-6 Fix the Camera

5. Install the mounting base of the wall mounting bracket.

- 1). Mark the screw holes on desired mounting place on wall according to the dimension of the mounting base.

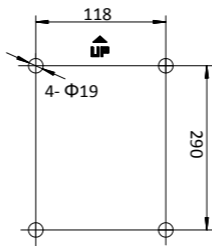


Figure 2-7 Mounting Base Dimension of the Bracket

- 2). Drill four screw holes for expansion bolts with a $\Phi 19$ mm drill.
- 3). Insert the expansion bolts and fix the mounting base at the direction indicated by the "UP" mark.

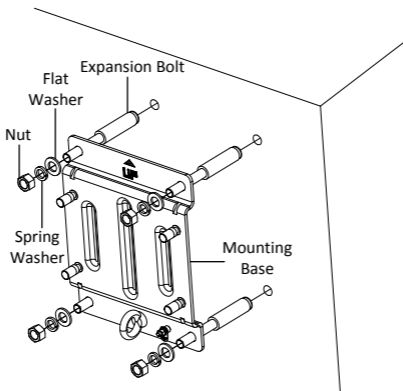


Figure 2-8 Install the Mounting Base of the Bracket

6. Fix the wall mounting bracket, together with the camera, to the mounting base of the bracket.
 - 1). Use safety rope to hook the camera and the mounting base of the bracket.
 - 2). Hang the bracket to the bolts on the mounting base. Secure the bracket with nuts, spring washers and flat washers.

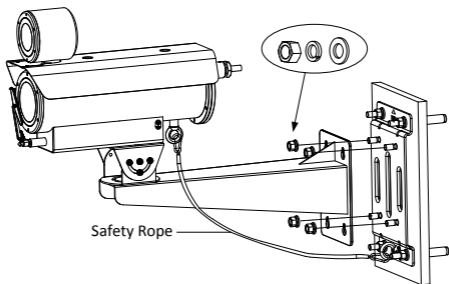


Figure 2-9 Fix the Wall Mounting Bracket to Mounting Base

3 Setting the Network Camera over the LAN

Note:

- You shall acknowledge that the use of the product with Internet access might be under network security risks. For avoidance of any network attacks and information leakage, strengthen your own protection. If the product does not work properly, contact with your dealer or the nearest service center.
- To ensure the network security of the network camera, we recommend you to have the camera assessed and maintained termly. You can contact us if you need such service.

3.1 Wiring

To view and configure the network camera via LAN (Local Area Network), you need to connect the network camera in the same subnet with your PC. Then, install the SADP or client software to search and change the IP address of network camera.

Connect the camera to the network according to the following figures

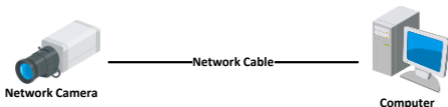


Figure 3-1 Connecting Directly

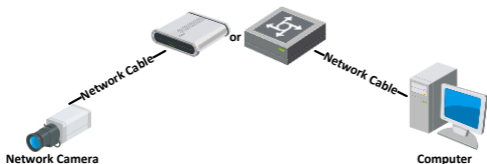


Figure 3-2 Connecting via a Switch or a Router

3.2 Activating the Camera

Purpose:

You are required to activate the camera first by setting a strong password for it before you can use the camera.

Activation via web browser, activation via SADP, and activation via client software are supported. We will take activation via SADP software and activation via web browser as examples to introduce the camera activation.

Note:

For the details of activation via client software, refer to the user manual of the network camera.

3.2.1 Activation via Web Browser

Steps:

1. Power on the camera. Connect the camera to your computer or the switch/router which your computer connects to.
2. Input the IP address into the address bar of the web browser, and enter the activation interface.

Notes:

- The default IP address of the camera is 192.168.1.64.
- The computer and the camera should belong to the same subnet.
- For the camera enables the DHCP by default, you need to use the SADP software to search the IP address.



Figure 3-3 Activation Interface (Web)

3. Create a password and input the password into the password field.



STRONG PASSWORD RECOMMENDED— *We highly recommend you create a strong password of your own choosing (using a minimum of 8 characters, including at least three of the following categories: upper case letters, lower case letters, numbers, and special characters) in order to increase the security of your product. And we recommend you reset your password regularly, especially in the high security system, resetting the password monthly or weekly can better protect your product.*

4. Confirm the password.
5. Click **OK** to activate the camera and enter the live view interface.

3.2.2 Activation via SADP Software

SADP software is used for detecting the online device, activating the camera, and resetting the password.

Get the SADP software from the supplied disk or the official website, and install the SADP according to the prompts.

Follow the steps to activate the camera.

Steps:

1. Run the SADP software to search the online devices.
2. Check the device status from the device list, and select the inactive device.

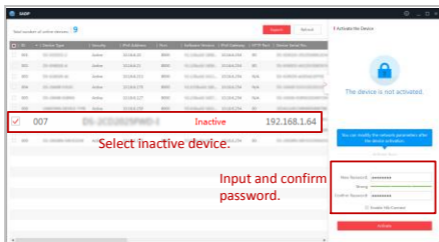


Figure 3-4 SADP Interface

Note:

The SADP software supports activating the camera in batch. Refer to user manual of SADP software for details.

3. Create a password and input the password in the password field, and confirm the password.



STRONG PASSWORD RECOMMENDED—*We highly recommend you create a strong password of your own choosing (using a minimum of 8 characters, including upper case letters, lower case letters, numbers, and special characters) in order to increase the security of your product. And we recommend you reset your password regularly, especially in the high security system, resetting the password monthly or weekly can better protect your product.*

4. Click **Activate** to save the password.

Note:

You can check whether the activation is completed on the popup window. If activation failed, make sure that the password meets the requirement and try again.

3.3 Modifying the IP Address

Purpose:

To view and configure the camera via LAN (Local Area Network), you need to connect the network camera in the same subnet with your PC.

Use the SADP software or client software to search and change the IP address of the device. We take modifying the IP Address via SADP software as an example to introduce the IP address modification.

Note:

For IP address modification via client software, refer to the user manual of client software.

Steps:

1. Run the SADP software.
2. Select an active device.
3. Change the device IP address to the same subnet with your computer by either modifying the IP address manually or checking the **Enable DHCP** checkbox.

Modify Network Parameters

Enable DHCP
 Enable Hik-Connect

Device Serial No.:

IP Address:

Port:

Subnet Mask:

Gateway:

IPv6 Address:

IPv6 Gateway:

IPv6 Prefix Length:

HTTP Port:

Security Verification

Admin Password:

[Modify](#)

[Forgot Password](#)

Figure 3-5 Modify the IP Address

4. Input the admin password and click **Modify** to activate your IP address modification. The batch IP address modification is supported by SADP. Refer to the user manual of SADP for details.

4 Accessing via Web Browser

System Requirement:

Operating System: Microsoft Windows XP SP1 and above version

CPU: 2.0 GHz or higher

RAM: 1G or higher

Display: 1024×768 resolution or higher

Web Browser: Internet Explorer 8.0 and above version, Apple Safari 5.0.2 and above version, Mozilla Firefox 5.0 and above version and Google Chrome 18 and above version

Steps:

1. Open the web browser.
2. In the browser address bar, input the IP address of the network camera, and enter the login interface.

Note:

The default IP address is 192.168.1.64. You are recommended to change the IP address to the same subnet with your computer.

3. Input the user name and password.

The admin user should configure the device accounts and user/operator permissions properly. Delete the unnecessary accounts and user/operator permissions.

Note:

The device IP address gets locked if the admin user performs 7 failed password attempts (5 attempts for the user/operator).

4. Click **Login**.



Figure 4-1 Login Interface

5. Install the plug-in before viewing the live video and managing the camera. Follow the installation prompts to install the plug-in.

Note:

You may have to close the web browser to finish the installation of the plug-in.



Figure 4-2 Download Plug-in

6. Reopen the web browser after the installation of the plug-in and repeat steps 2 to 4 to login.

Note:

For detailed instructions of further configuration, refer to user manual of network camera.

